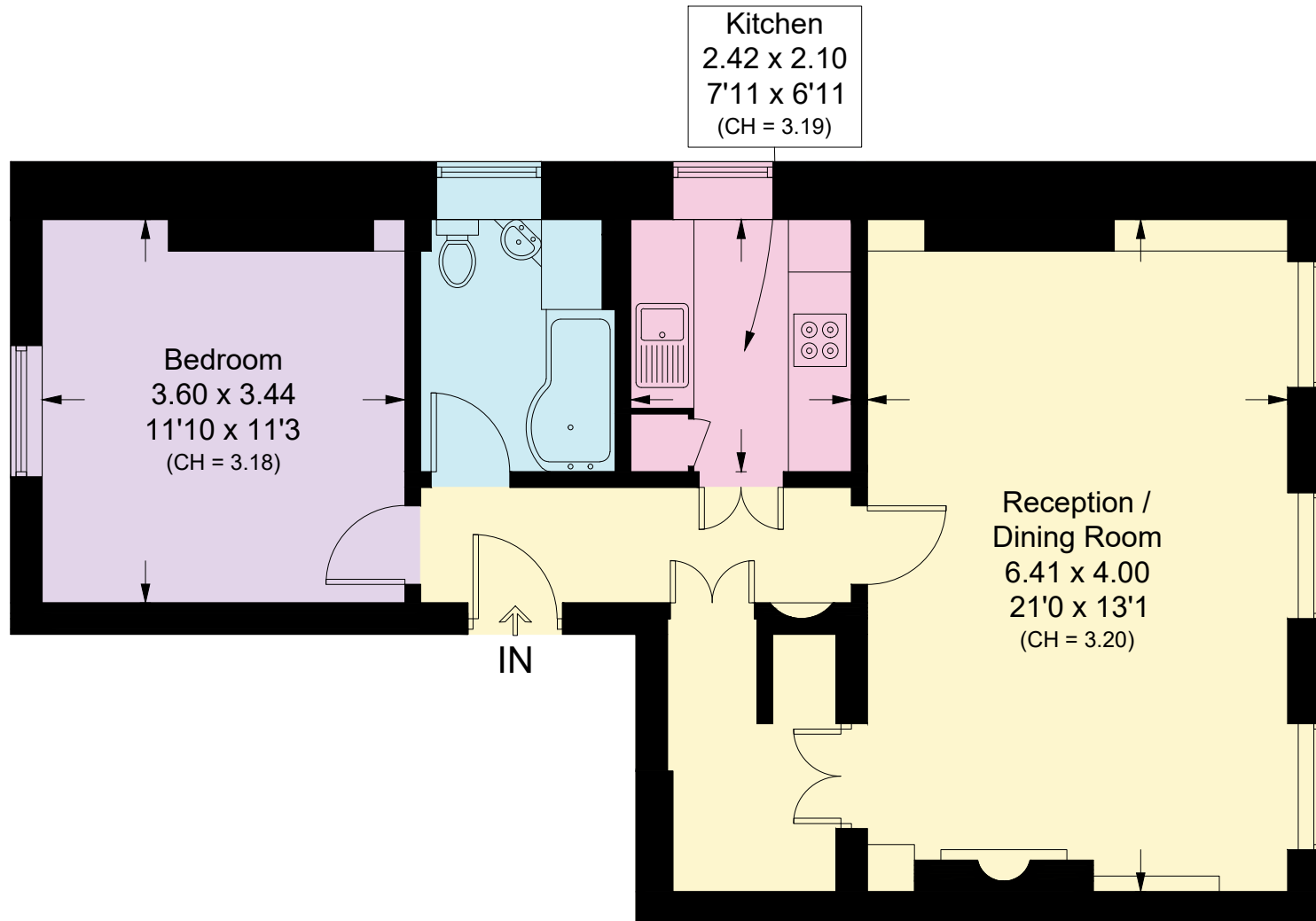


Hyde Park Gardens, W2

Approximate Area = 61.4 sq m / 661 sq ft
Including Limited Use Area (1.5 sq m / 16 sq ft)



Third Floor

Approximate Area = 61.4 sq m / 661 sq ft
Including Limited Use Area (1.5 sq m / 16 sq ft)

Surveyed and drawn in accordance with the International property measurements standards (IPMS 2: Residential) Not drawn to scale unless stated. Whilst every care is taken in the preparation of this plan, please check all dimensions, shapes and compass bearings before making any decisions reliant upon them.